

Cutimed® Off-Loader Select

Total Contact Cast System

A PROVEN
LEADER IN
DIABETIC FOOT
ULCER HEALING



**TAKE THE
LOAD OFF.
TURN THE
HEALING ON.**

- TRUE total contact
- Forced patient compliance
- Locks in toe and heel
- Customizable for most legs
- Cost-effective

Cutimed® Off-Loader Select – Total Contact Cast

Evidence based treatment guidelines including consensus documents and it is agreed that the Total Contact Cast (TCC) System is the Gold Standard of Care for off-loading, which is required for the healing of diabetic foot ulcers*¹. Now, the world's leading casting company brings you the Cutimed® Off-Loader Select Total Contact Casting System in an easy to use kit.

*¹Consensus recommendations , Snyder, Kirsner, Laverly, OWM 2010

Guidelines for the treatment of diabetic ulcers, Steed et al. Wound Rep Reg (2006) Wound Healing Society



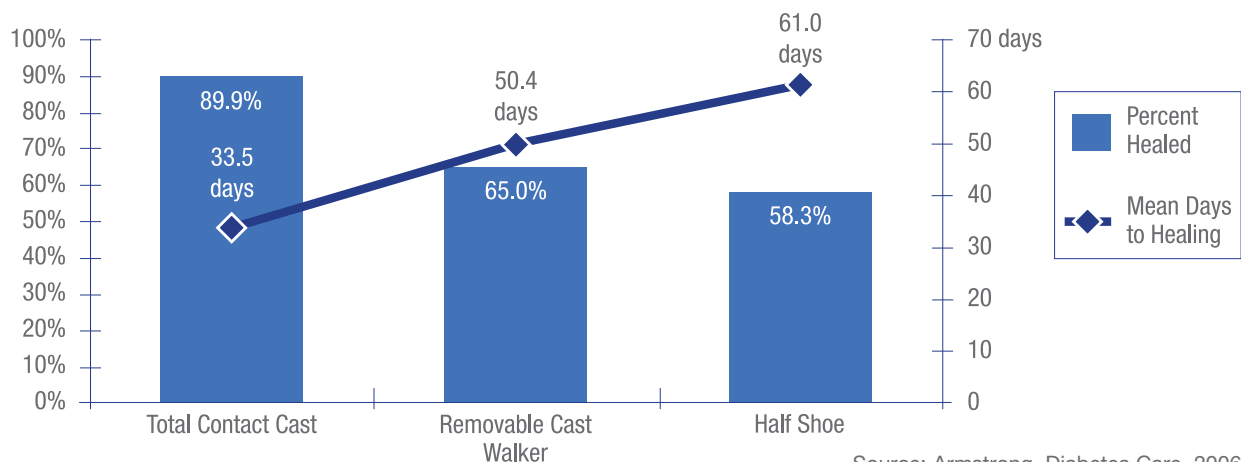
Evidence Based Results

Total contact casting provides higher percentage of ulcers healed vs other methods of offloading*²

- 90% TCC
- 65% RCW (Removable Cast Walker)
- 58% Half Shoe

*²Armstrong Diabetes Care 2001; 24:1019–22. [RCT]

Off-Loading - Comparing Healing Rates Against Methods



Benefits of Using Cutimed Off-Loader Select Total Contact Cast System

- True total contact
- Rigid casting that is demonstrated to dramatically cut waiting time
- Locks the heel and toes in place to significantly reduce shear, stress and friction
 - Highest reduction in impact, velocity and duration
 - Works to significantly reduce repetitive stress injury
 - Works to limit time under stress
 - Protects fragile wound bed and wound edges from shear and friction damage
 - Reduces inflammation due to repetitive tissue damage
- Comes in complete, easy to fit kits that take less than 10 minutes to apply
- Achieves greater patient compliance

Cutimed Off-Loader Select offers superior results to newer more expensive therapies

	% Healed	Healing Time
Total Contact Cast	80-90%	42 days
Removable Boot	52-74%	38-50 days
Apligraf	56%	65 days
Dermagraft	50%	72 days
*Regranex	50%	140 days

Reyes, Diabetes Care, 2001, Gentzkow; Diabetes Care, 1996;

Armstrong, Diabetes Care, 2007; Mueller, Diabetes Care, 1989; Peters, Arch Phys Med Rehab, 2001

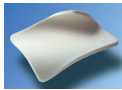
*Kantor, Margolis; Expected Healing Rates for Chronic Wounds, Wounds 2000, 12: 155-158

Why a kit?

- Time savings
- Standardize treatment
- Convenience
- Reduces inventory requirements



Kit components



Cutimed® Cavity is a sterile dressing, made from hydrophilic absorbent polyurethane foam. If is soft, highly absorbent and conformable creating the ideal environment for moist wound healing.



Delta Terry-Net™ C cotton stockinette has excellent absorption and conformability. Reduces the risk of bunching in the dorsum of the foot.



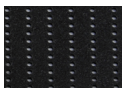
Delta Terry-Net™ adhesive felt padding for added protection of bony the bony prominences of the tibia and malleoli.



Specialist® 100 cotton cast padding is soft and made of 100% cotton. It has excellent absorption properties and low loft needed for a total contact cast.



Delta-Lite® Conformable is a patented fiberglass cast tape that provides unsurpassed conformability, greatly reducing the need to tuck and fold during application.



Perforated open cell foam to protect the toes and allow more breathability than nonperforated foams.



Cotton gauze used between the toes to reduce the risk of skin maceration.



Procedure Coding

CPT/APC Code Descriptor

29445/0426

Application of the ridge
Total Contact leg Cast

Physician Reimbursement

CPT 29445

Facility Reimbursement

CPT 29445

Links to APC code 0426

HCPCS, CPT/APC Codes and reimbursement information listed are only suggested codes / prices; other codes may be more applicable depending on intended product use. Consult your DMERC Supplier Manual for verification, allowances and fees. Codes are subject to change without notice. Your individual DMERC can provide you with the most accurate and current information.

Cutimed® Off-Loader Select - Synthetic

Ref. No.	Size	Qty
7800901	Cutimed® Cavity	1 each
	2" x 2" Cotton Gauze	4 each
	3" Delta-Lite® Conformable	3 rolls
	4" Delta-Lite® Conformable	2 rolls
	3" Delta Terry-Net™ Stockinette	1 each
	4" Specialist® 100 Cotton Cast Padding	2 each
	Delta Terry-Net™ Adhesive Felt	1 each
	Open Cell Foam	1 each

Cutimed® Off-Loader Select - Plaster & Synthetic Combination

Ref. No.	Size	Qty
7800900	Cutimed® Cavity	1 each
	2" x 2" Cotton Gauze	4 each
	4" Ortho-Flex® Elastic Plaster	3 rolls
	4" Extra Fast Gypsona® S	2 rolls
	3" Delta-Lite® Conformable	1 each
	4" Delta-Lite® Conformable	2 each
	3" Delta Terry-Net™ Stockinette	1 each
	4" Specialist® Cotton Cast Padding	1 each
	Delta Terry-Net™ Adhesive Felt	1 each
	Open Cell Foam	1 each

Canvas Rocker Bottom Cast Shoe

Ref. No.	Description	Qty
43101408	Canvas Rocker Bottom Cast Shoe - Small	1 each
43101505	Canvas Rocker Bottom Cast Shoe - Medium	1 each
43101602	Canvas Rocker Bottom Cast Shoe - Large	1 each
43101709	Canvas Rocker Bottom Cast Shoe - X-Large	1 each

Please refer to the product label and / or package insert for full instructions on the safe use of these products.

*3 Caution: This product contains natural rubber latex which may cause allergic reactions

BSN medical Inc. 5825 Carnegie Blvd. Charlotte, NC 28209-4633
Tel. (+1) 704 554 9933 Fax (+1) 704 358 4558 www.bsnmedical.com
To order toll-free: BSN medical (+1) 800 552 1157

